

ZM

M.A.D. Zonematic

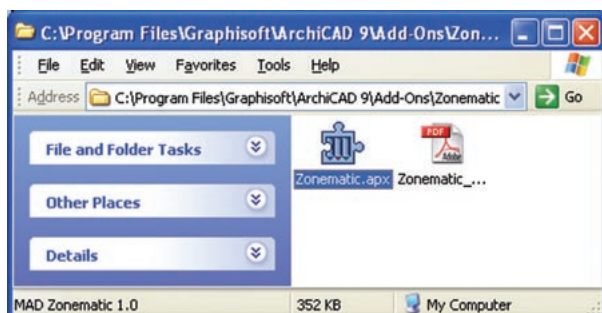
ZM

This add-on reads room list from text file and creates zone elements according to the read file. The add-on helps drafting a new model. You can establish links between zones to represent access from a space to another.

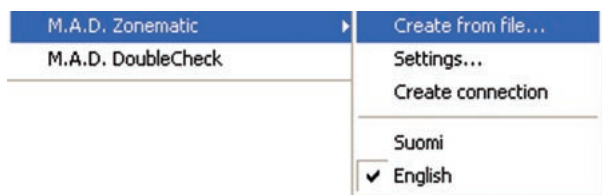
These links are automatically updated when zone is moved or edited.

1 Installation

Check your ArchiCAD version and download Zonematic according to your ArchiCAD version. Close ArchiCAD. Create folder Zonematic under Add-Ons -folder. The Add-Ons -folder is under ArchiCAD installation folder (C:\Program Files\Graphisoft\ArchiCAD 9 on Windows and Programs/Graphisoft/ArchiCAD 9 on Mac as default). Unzip installation zip into that folder. After unzipping the folder should look like:



Start ArchiCAD. You will find M.A.D. Zonematic from Tools-menu.



2 Registering

The add-on works as demonstration version until registered. To register the product, order a registration code from M.A.D. (<http://www.mad.fi/mad/english/englishzonematic.html>), enter the registration code to its field and press Register-button.

This is M.A.D. Zonematic-demonstration version. Demonstration version creates only 20 zones and connections.

For more information register through addresses below. For registration tell your protection module's number.

WWW:

E-mail:

Fax:

Phone:

Module number:

Enter your five digit registration code here. Please note that you need a new code if your protection key changes.

Code:

3 Create from file

Create on layer

Distance mm

Read file

File has to be in plain text format columns separated with TAB.
Data taken from columns:
A = Type, B = Name, C = Number, E = Area
D = Floor, F = Info, G = Subheading.

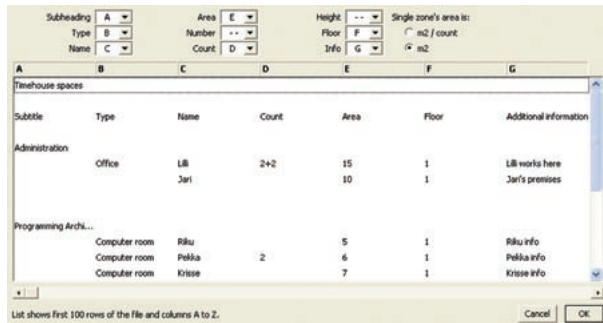
This dialog defines:

- The layer where the zones will be created
- Horizontal distance between the zones
- Name of the input file
- ...-button will open standard file open dialog

The input file must be in text format columns separated with tab-character. Table columns are defined in separate dialog. (See image on next page.)

	A	B	C	D	E	F	G
1	Timehouse spaces						
2							
3	Subtitle	Type	Name	Count	Area	Floor	Information
4							
5	Administration						
6		Office	Lilli	2+2	15	1	Lilli works here
7			Jari		10	1	Jari's premises
8							
9							
10	Programming ArchiCAD						
11		Computer room	Riku		5	1	Riku info
12		Computer room	Pekka	2	6	1	Pekka info
13		Computer room	Krisse		7	1	Krisse info
14		Computer room	Miika		8	1	Miika info
15							
16	Testing	Test space	Testing1		10		
17			Testing2		20		
18			Testing3		30		
19							
20							
21	Web programming						
22		Computer room	Tapsa	3*2	10	1	Tapsa info
23		Computer room	Seppo		11	1	Seppo info

4 Columns in input file

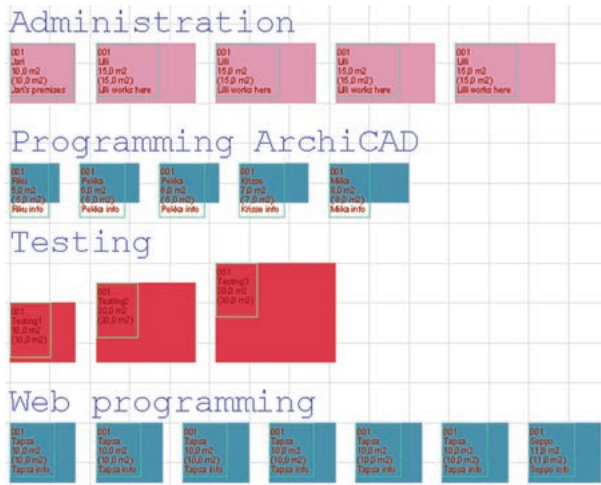


Drop down lists at the top of the dialog define what information each column contain in the input file. For example the name of the zones will be read from column C. If there is no matching information in the input file, no column is selected (like Number in above image). The different information types are:

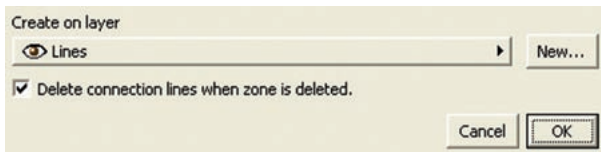
- **Zone type=Zone category.** Groups similar spaces together.
- **Name.** Will be saved into zone's stamp's string-parameter ROOM_NAME.
- **Number.** Will be saved into parameter ROOM_NUMBER.
- **Area.** Desired area. In final drawing the area may be different due to architectural reasons. This value is saved into numeric parameter FM_ohjeala.
- **Height.** Desired height. This value is saved into numeric parameter ROOM_HEIGHT.
- **Floor.** Defines into which floor the space belongs to. The zone will be created into this floor.
- **Number of rooms.** How many zones to create. If this information is missing, just one zone will be created.– **Info.** This value is saved into string parameter FM_info.
- **Subheading.** Add-on creates text element before creating zones of this type.

5 Creating zones

After pressing OK-button add-on will create new zone categories and zones into the drawing. Zones will be created using zone tool settings.



6 Settings



In this dialog you define the layer where connection lines will be placed. New layer can be created with New-button. If delete-option is not checked, the connection lines are not deleted when attached zone is deleted.

7 Create connection

This command creates connections between selected zones. Connections are represented by lines. Connection lines can show for example frequent access between spaces. These lines help planning space utilization.

Line settings are taken from line element tool. Adjust the settings before creating the connection. You may change line settings also afterwards. Connections are dynamic – lines will follow zones when zones are edited or moved. Deleting a zone removes the connection and connection lines unless automatic deleting is prevented from settings dialog. Note! Undoing deleting zones does not undo deleted connections. In this situation the connections must be re-established.

